

Inferior lobe

oblique fissure

Middle lobe

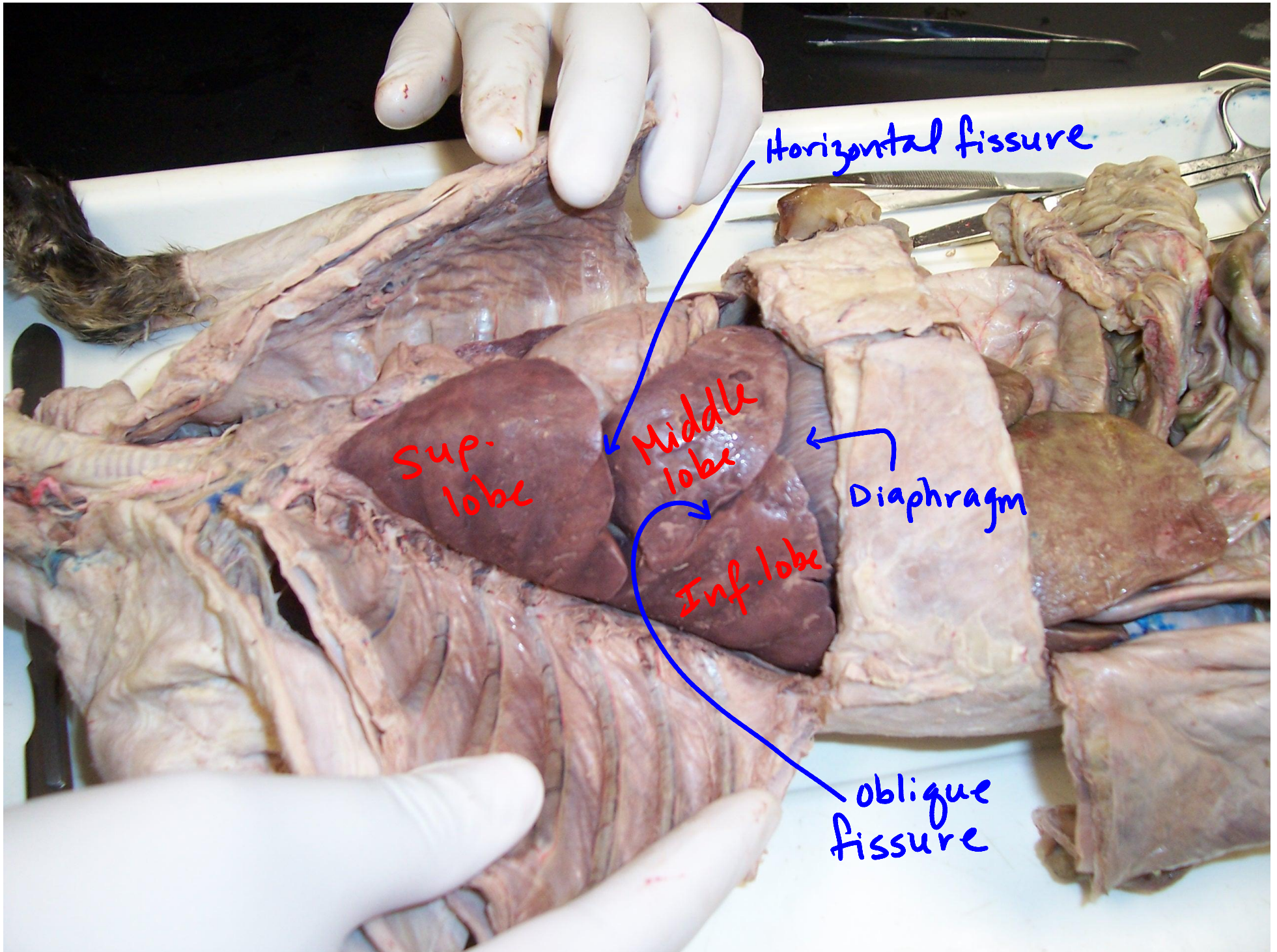
horizontal fissure

superior lobe (Rt.)

Rt. pleural cavity

Trachea

left pleural cavity.



Horizontal fissure

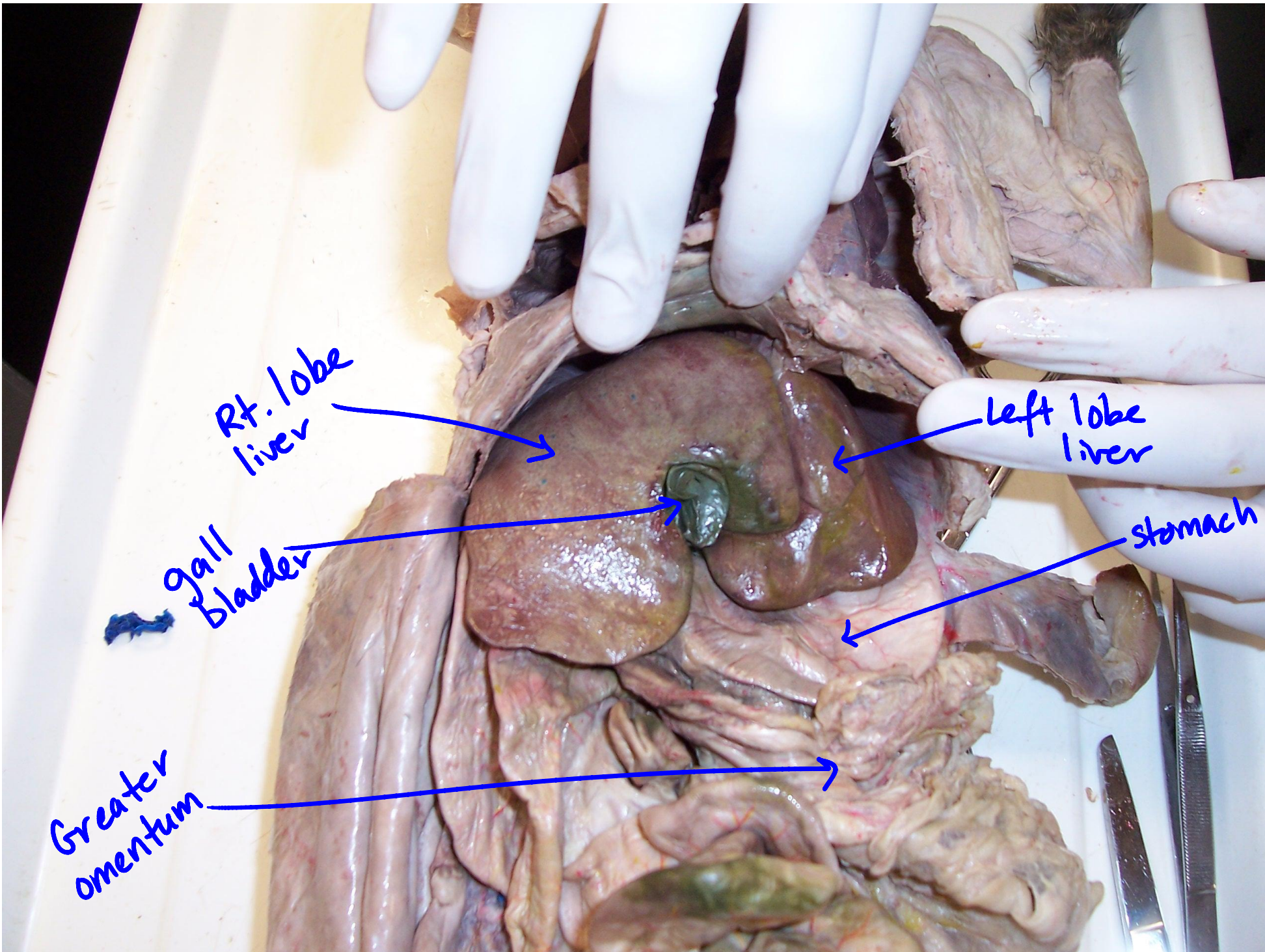
Sup. lobe

Middle lobe

Inf. lobe

Diaphragm

oblique fissure



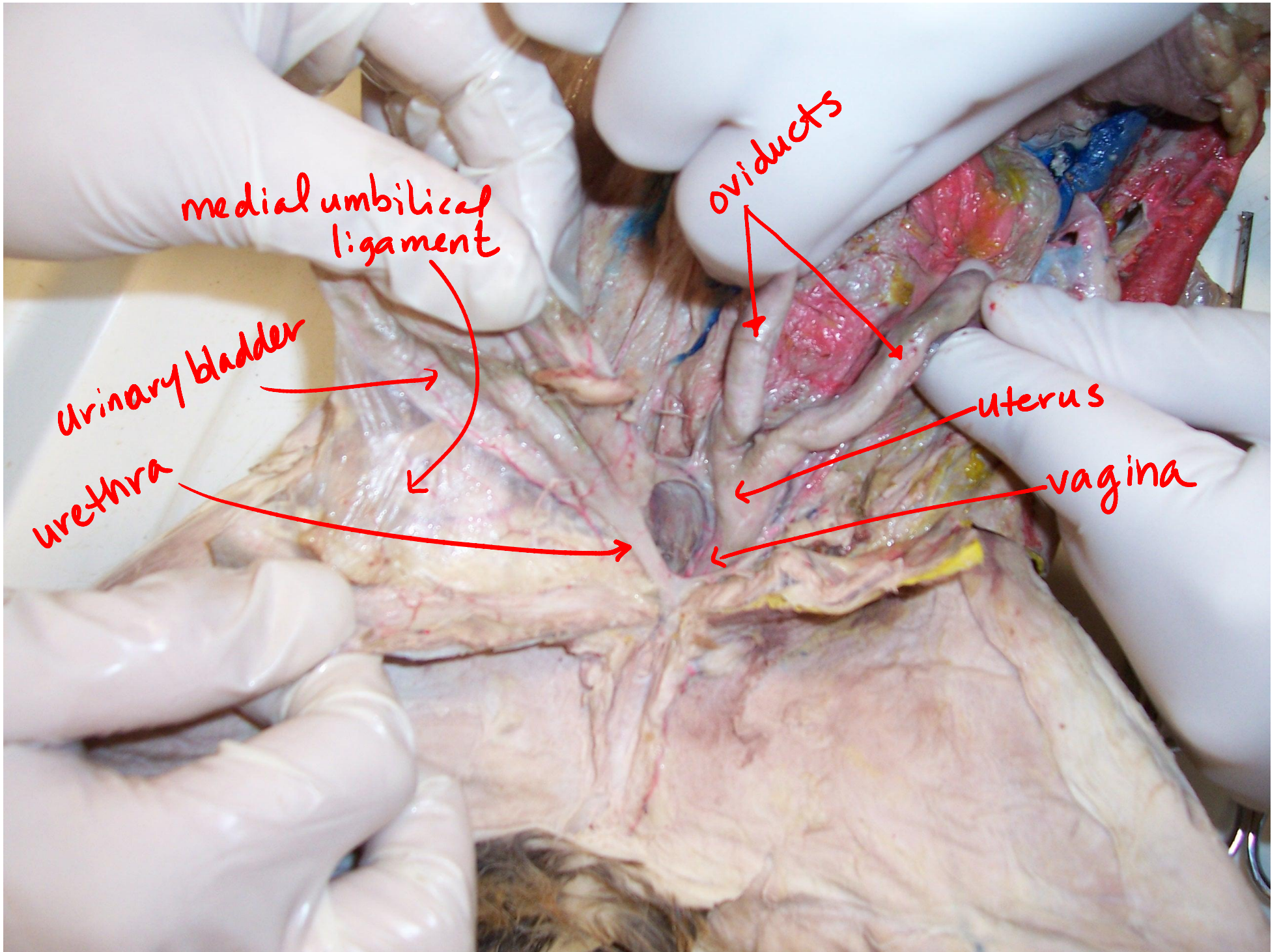
Rt. lobe
liver

Left lobe
liver

Gall
Bladder

Stomach

Greater
omentum



medial umbilical ligament

oviducts

urinary bladder

uterus

urethra

vagina



oviduct

ovary (Rt.)

uterus

oviducts

