

Left hemisphere

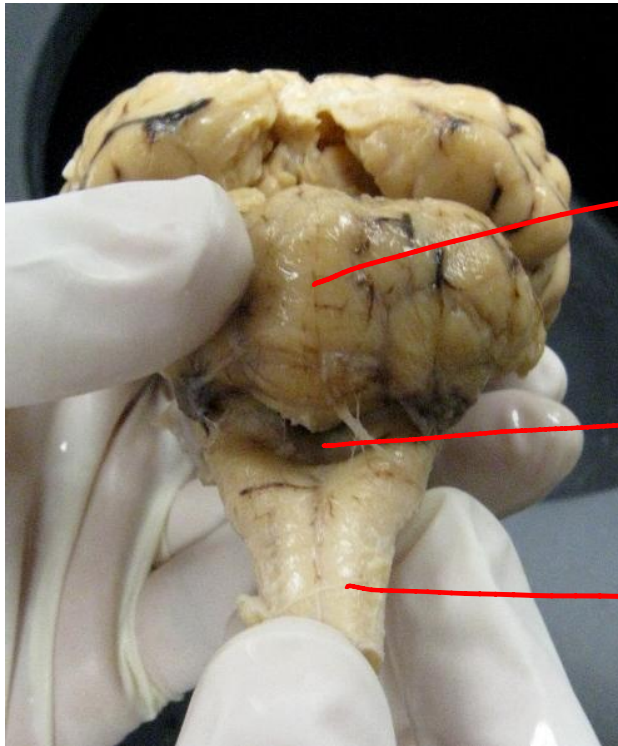
Right hemisphere

Longitudinal fissure

L. hemisphere (cerebellum)

R. hemisphere (cerebellum)

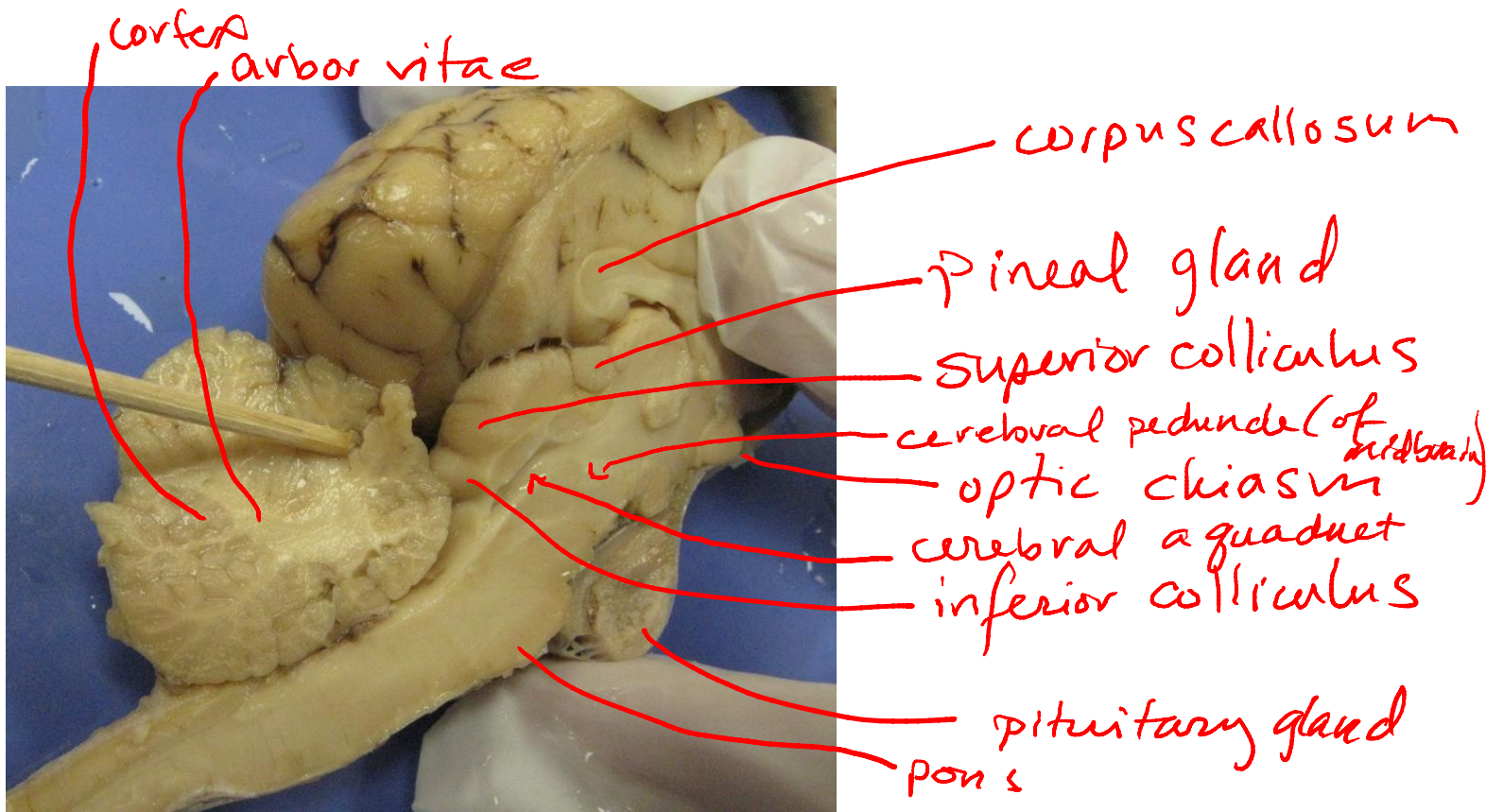
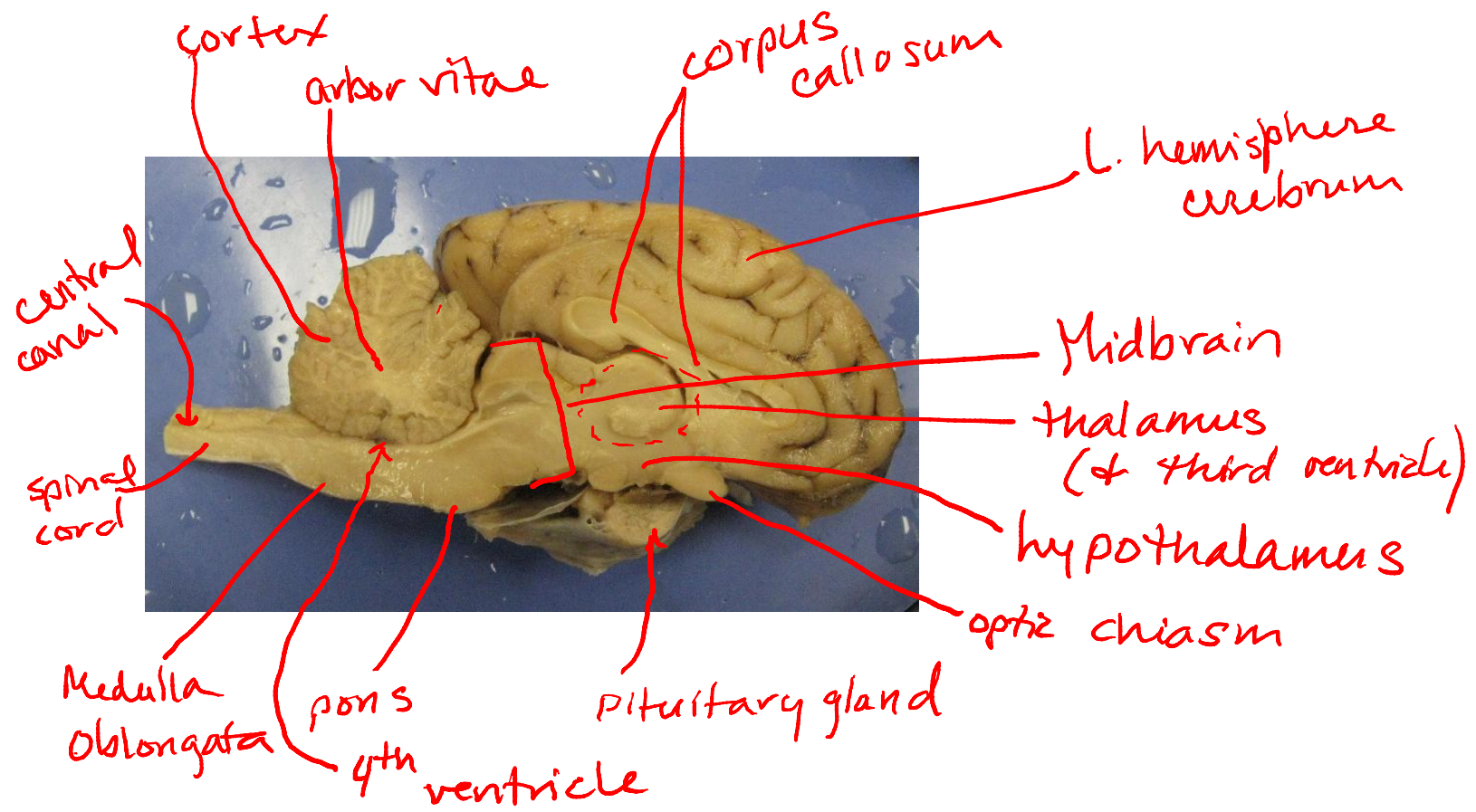
Vermis

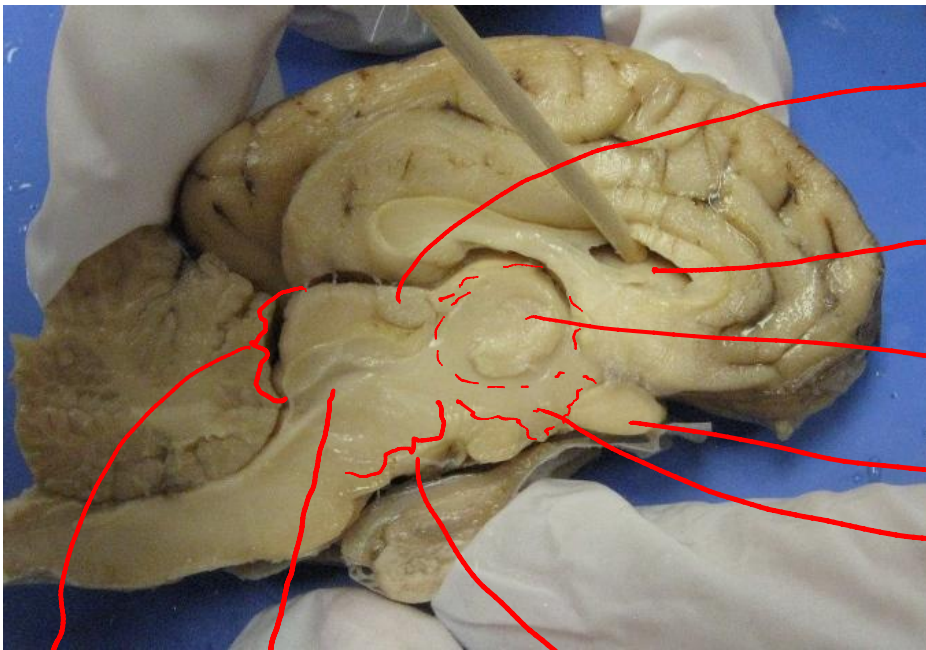


Vermis

4<sup>th</sup> ventricle

spinal cord





pineal gland

lateral ventricle

thalamus (+ 3<sup>rd</sup> ventricle)

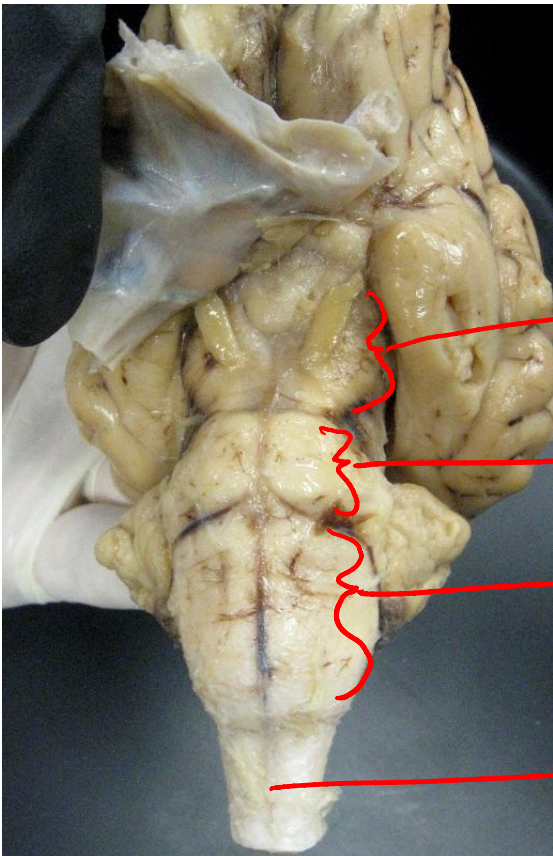
optic chiasm

hypothalamus

superior & inferior colliculi of midbrain

Cerebral aqueduct

Cerebral peduncle OF MIDBRAIN

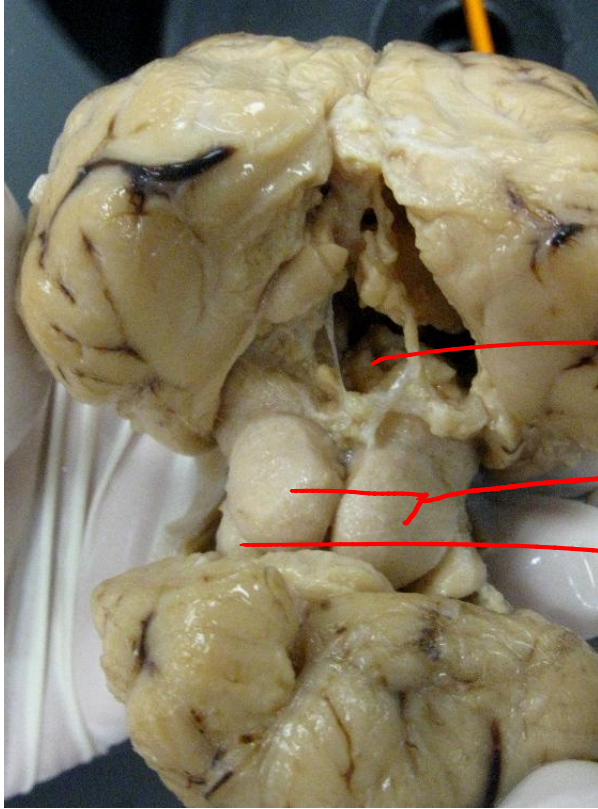


cerebral peduncle OF MIDBRAIN

PONS

Medulla Oblongata

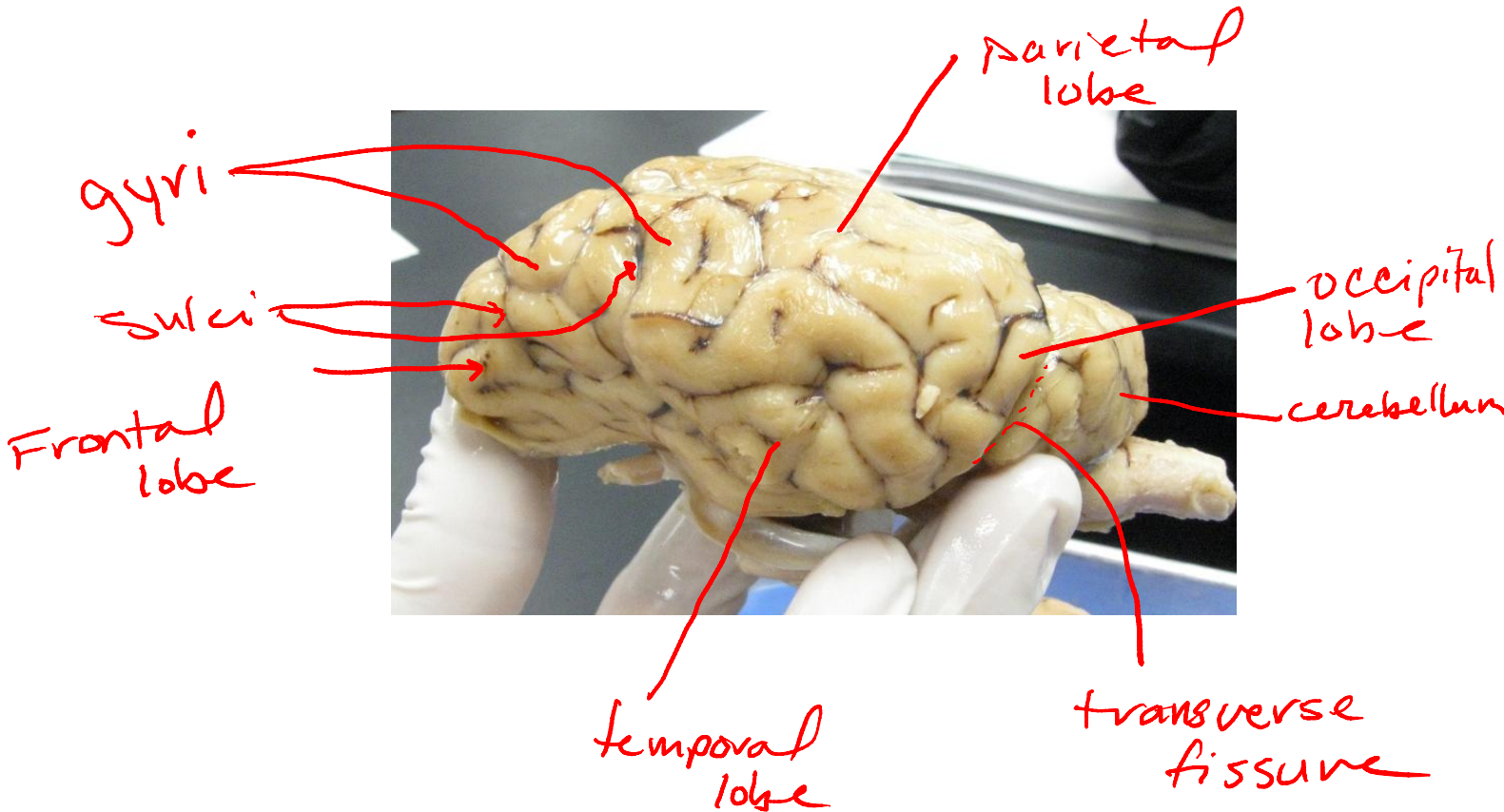
spinal cord



pineal body (gland)

superior colliculi

inferior colliculus  
(other one is not visible)



gyri

sulci

Frontal lobe

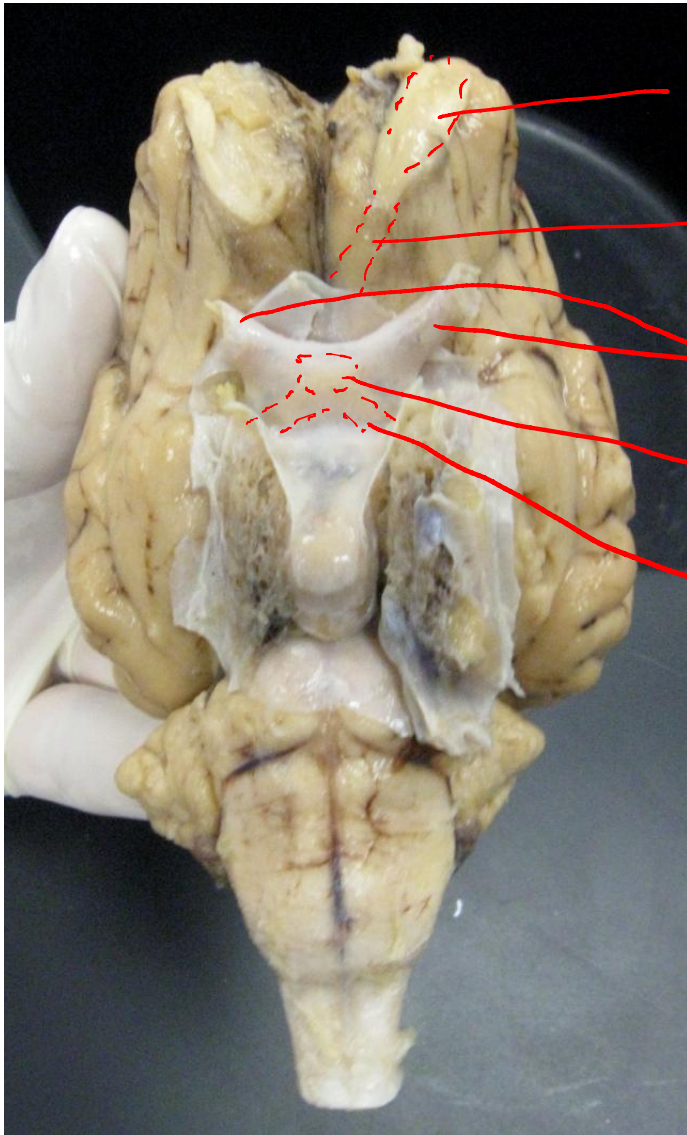
parietal lobe

occipital lobe

cerebellum

temporal lobe

transverse fissure



CN I synapses here)  
olfactory Bulb

olfactory tract

Optic Nerve (CN II)

Optic chiasm

optic tract