

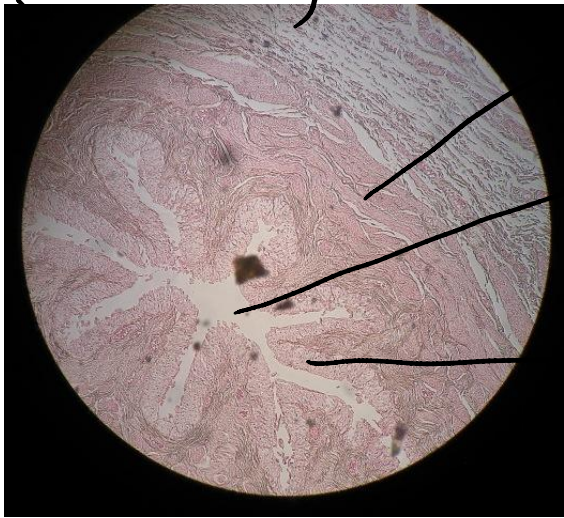
secondary follicle

oocyte

antrum

granulosa cells

(ureter)



muscularis

lumen

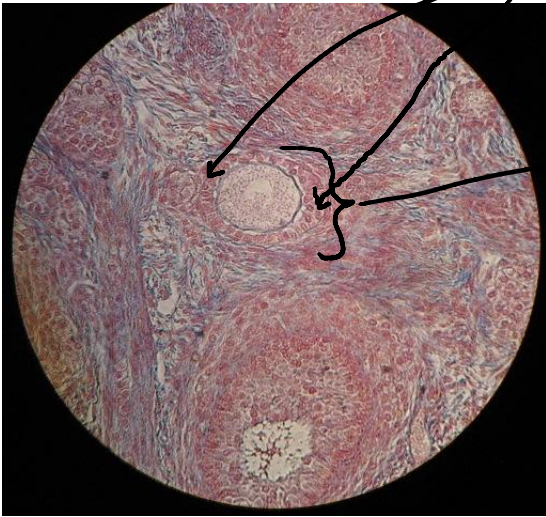
mucosa

(Pancreas)



Islets of Langerhans

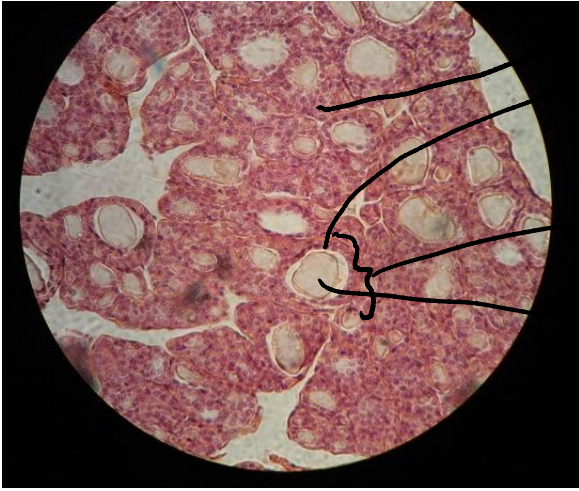
Acini cells



granulosa cells

Primary follicle

(Thyroid)



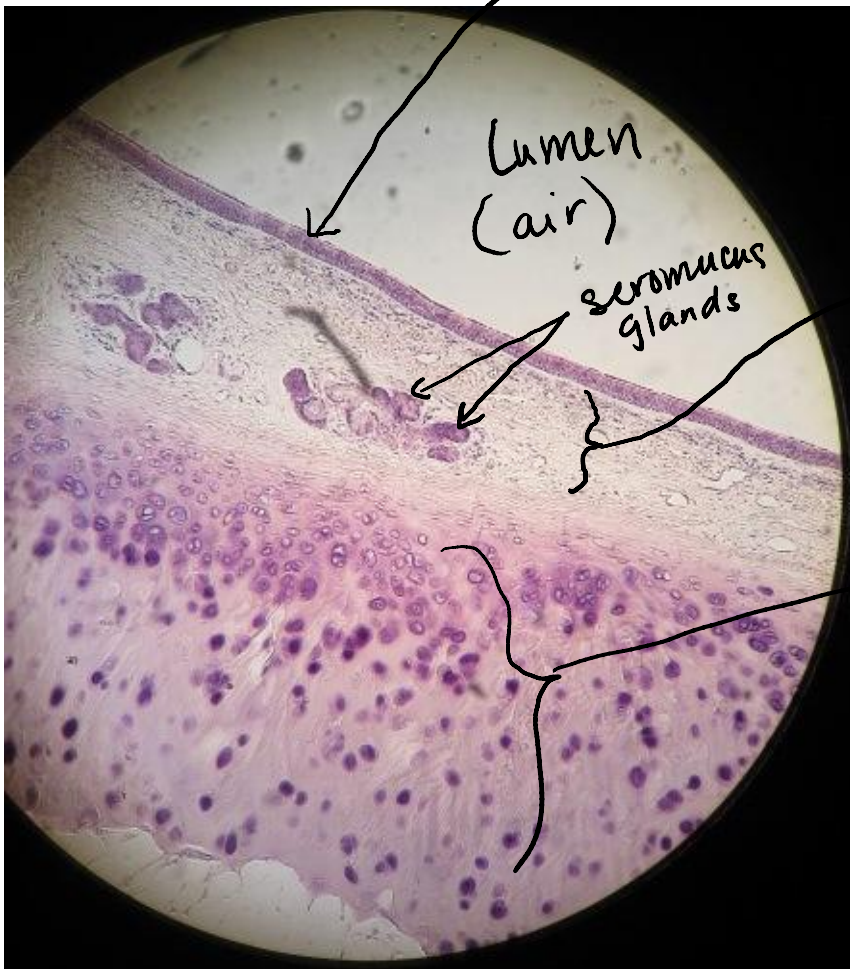
parafollicular cells
follicle cells
Thyroid follicle
Colloid



sperm cell
Head
Midpiece
Tail
Semen

(Trachea)

Mucosa



Lumen
(air)

seromucous
glands

Submucosa

Hyaline
Cartilage
rings