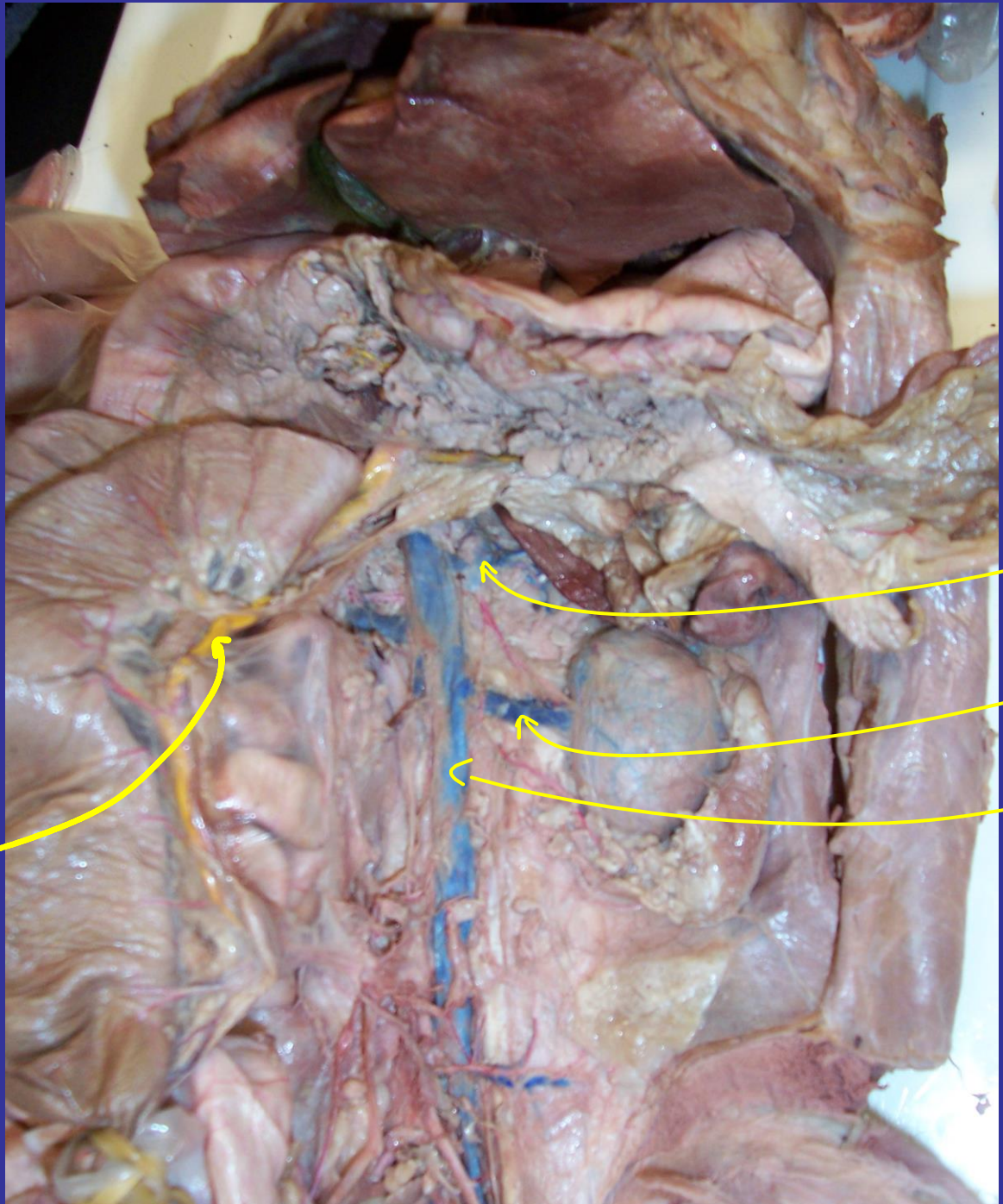


- femoral artery
- popliteal artery
- femoral vein
- small saphenous vein
- popliteal vein
- Great saphenous vein
- Lower limb



Inferior
mesenteric
vein

suprarenal vein

renal vein

Inferior
vena cava

uterus

common iliac vein (becomes internal & external iliacs).

ovarian veins & arteries

splenic artery

left gastric artery

common hepatic artery

celiac trunk

renal vein

ovary cut from fallopian tube

superior mesenteric artery
(gives rise to intestinals, ileocolic & pancreaticoduodenal arteries)

abdominal (descending) aorta

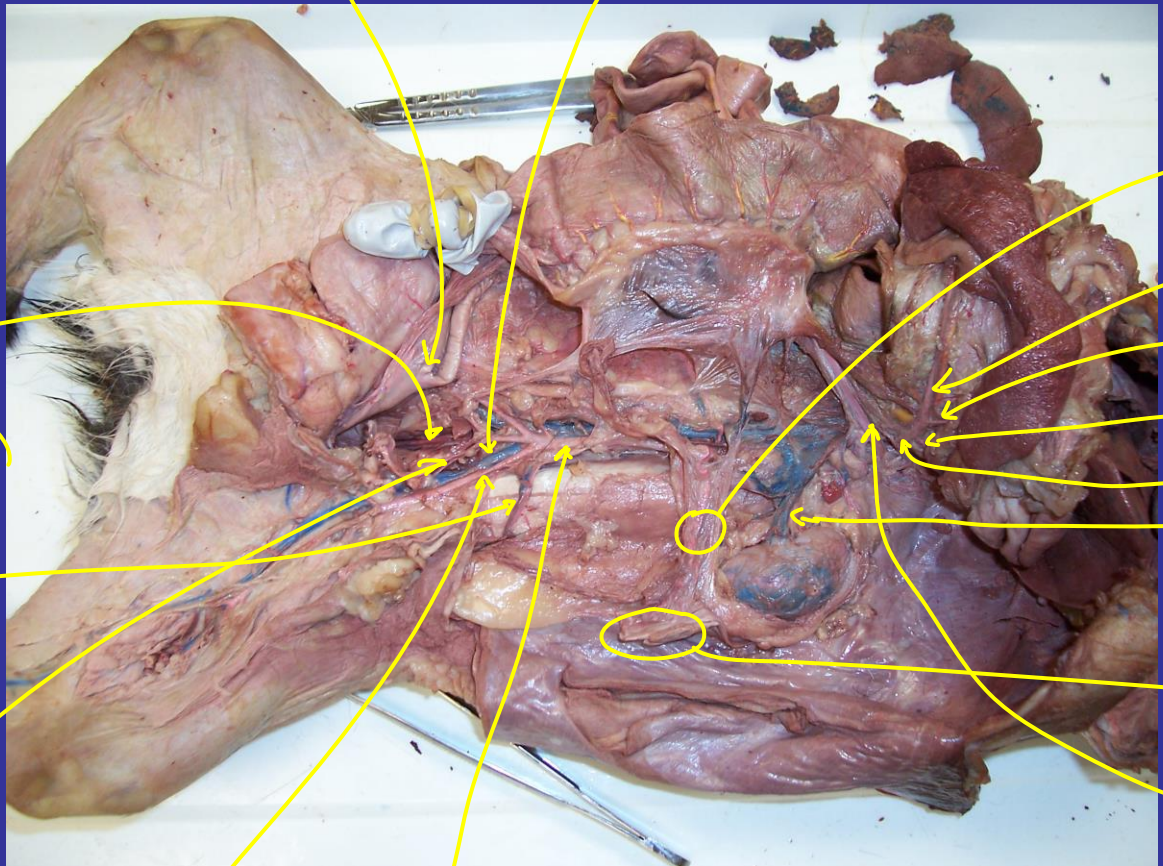
External iliac artery

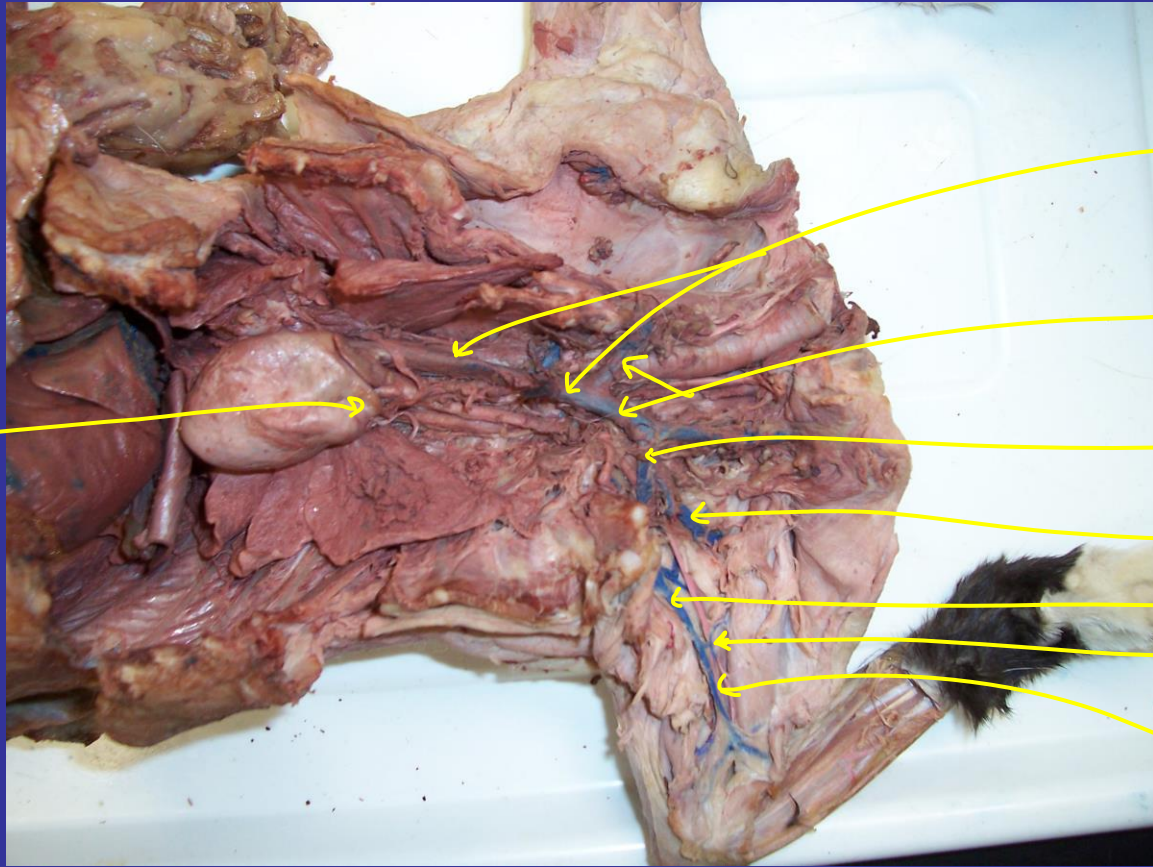
Internal iliac artery

Ileolumbar vein (b)

Ileocolic artery (p)

Median sacral vein (blue) & artery (pink)





Pulmonary trunk

superior vena
cava

Brachiocephalic
veins

subclavian
vein

cephalic vein

axillary vein

Brachial vein

Basilic vein