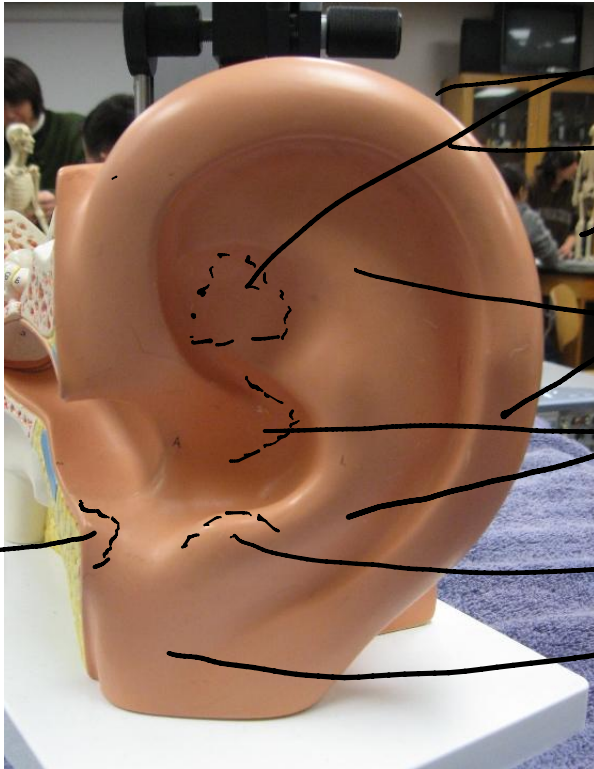


# Auricle



triangular fossa

Helix

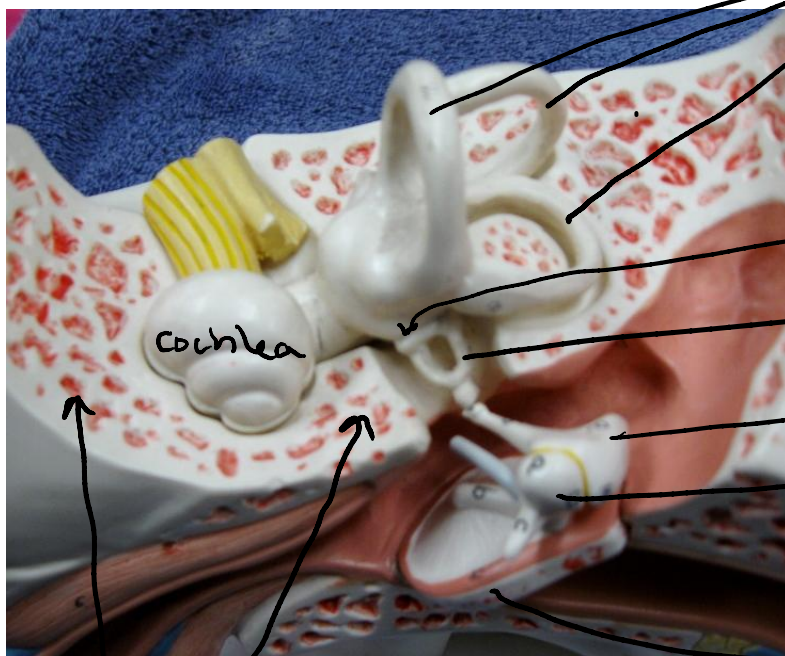
antihelix

concha

antitragus

Lobule

tragus



semicircular canal

oval window

stapes

incus

malleus

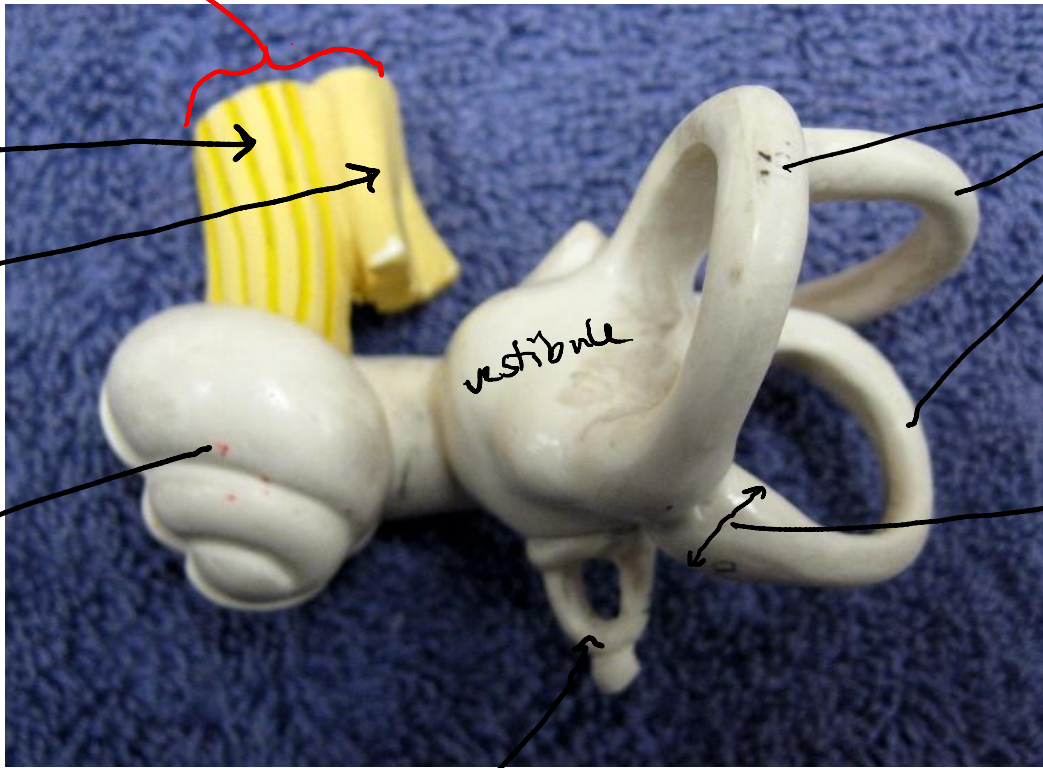
Tympanic membrane

cochlea

petrous region of temporal bone

# Bony Labyrinth

CN VIII



Cochlear Nerve

Vestibular Nerve

Cochlea

vestibule

stapes

S.C.C.

ampulla