

(CN I synapses here)  
olfactory bulb  
olfactory tract

Lat sulcus

optic nerve (CN II)

optic tract

optic chiasm

pituitary gland

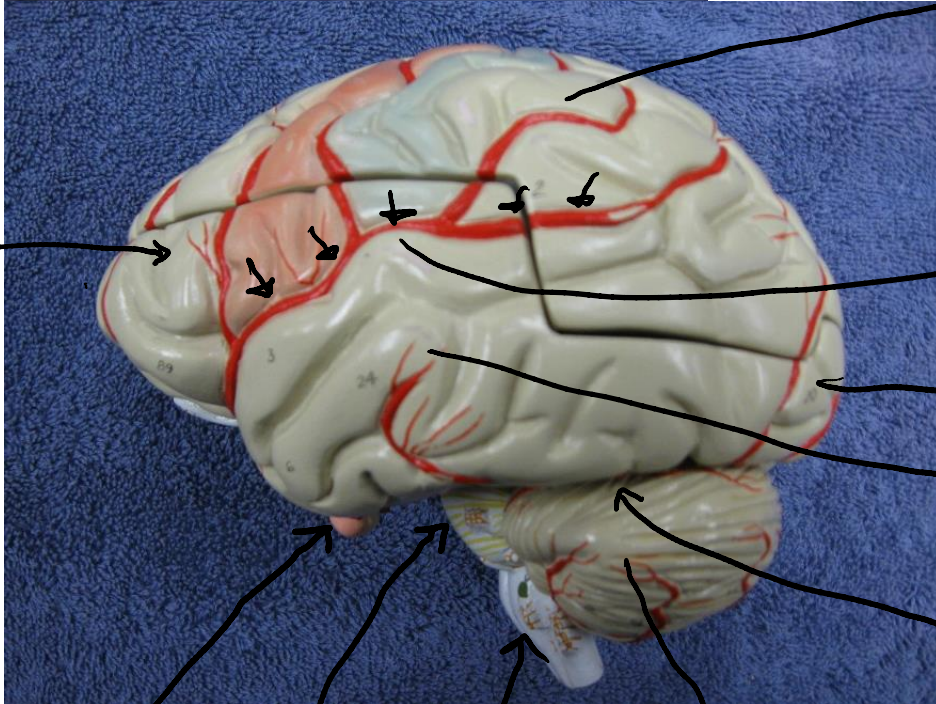
pons

Medulla oblongata

CN III  
CN IV  
cerebral  
peduncle  
of Midbrain  
CN V  
CN VI



CN



Frontal lobe

Parietal lobe

Lat. sulcus

Occipital lobe

Temporal lobe

transverse fissure

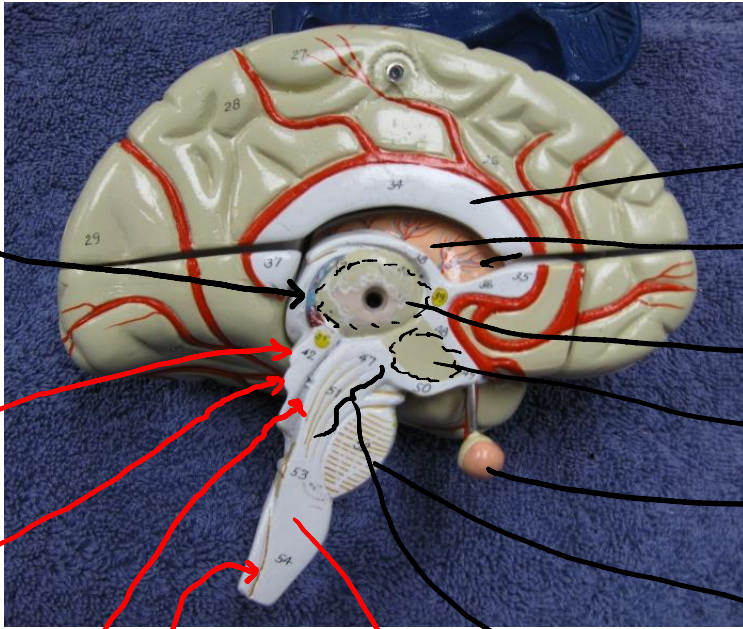
Pituitary

Pons

Med. Ob.

Cerebellum

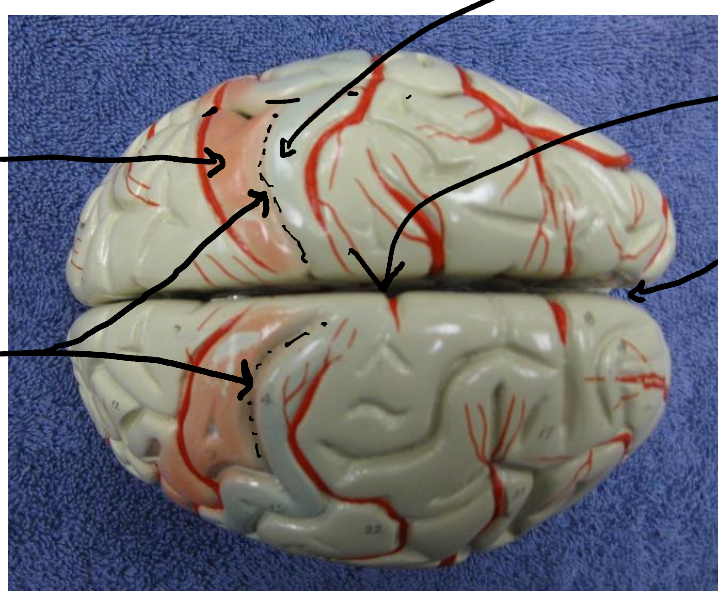
# LEFT HEMISPHERE



Choroid plexus  
sup. Colliculus  
Inf. Colliculus

Corpus callosum  
Lateral ventricle  
Thalamus  
Hypothalamus  
Pituitary  
Pons  
Cerebral peduncle of midbrain

Cerebral aqueduct  
Central canal  
Medulla oblongata



Precentral gyrus  
Central sulcus

Postcentral gyrus  
Longitudinal fissure

# Right hemisphere



Pineal gland

arbor vitae

cortex